



DEJIMA MESSE NAGASAKI

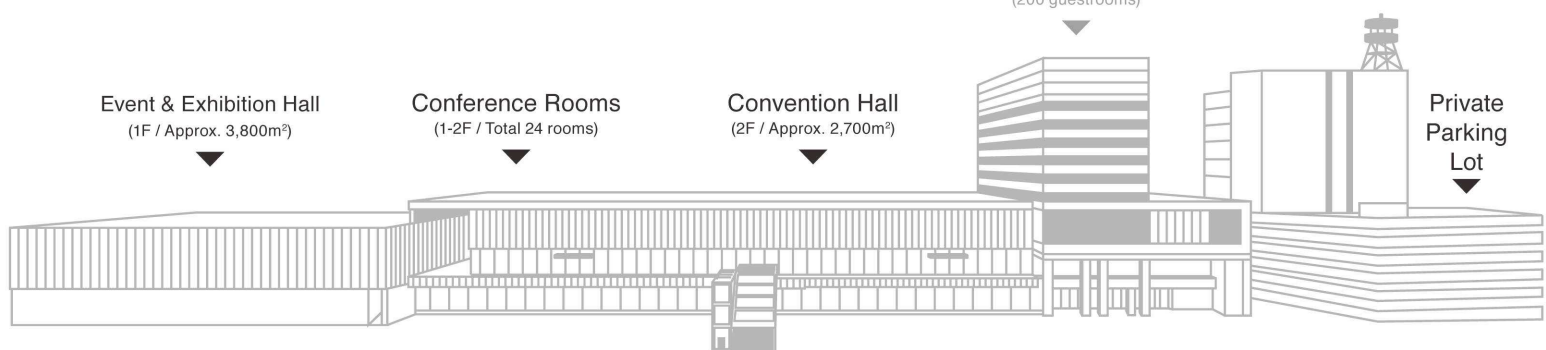
Event & Exhibition Hall
(1F / Approx. 3,800m²)

Conference Rooms
(1-2F / Total 24 rooms)

Convention Hall
(2F / Approx. 2,700m²)

Hilton Nagasaki
(200 guestrooms)

Private
Parking
Lot





WHY DEJIMA M

01 Meets every event need from large-scale MICE meetings/events to intimate workshops

Dejima Messe features an Event & Exhibition Hall of approximately 3,800 m². The Convention Hall of about 2,700 m² can be divided and used flexibly for different layouts, theater or classroom style, round tables, etc. We also have 24 conference rooms of various types, large, medium and small, from 20 to 600 m².

02 Direct access to JR Nagasaki Station's West Exit

Conveniently located right in front of Nagasaki Station. Using the covered pedestrian deck that connects the station and Dejima Messe Nagasaki, it is easy to access the facilities around the station, Amu Plaza, etc. The airport limousine bus terminal is also nearby, convenient for those traveling by air.

From large-scale MICE meetings/events to intimate workshops,
Ready to Support All Your Needs !



Nagasaki's First Full-Scale Convention Facility



ESSE NAGASAKI

03 Adjacent to Hilton Nagasaki

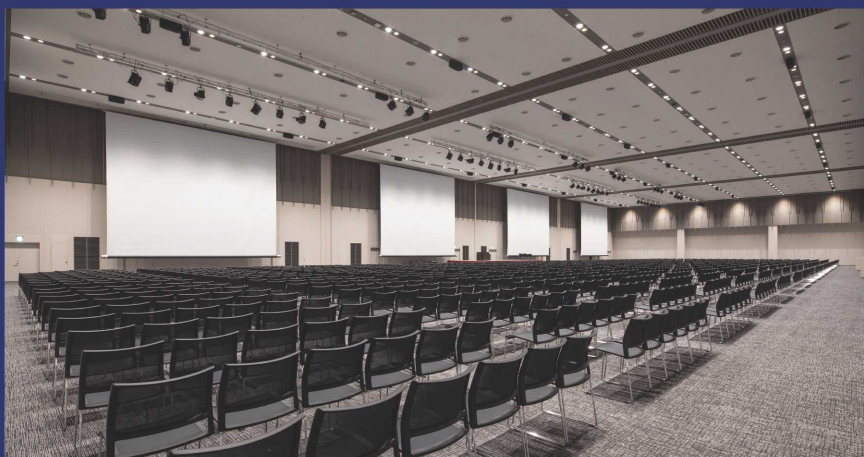
Opened in the fall of 2021, as only the second Hilton property in Kyushu and of the prestigious international brand, the Hilton Nagasaki boasts 200 luxurious rooms. The hotel accommodates all of your esteemed delegates, including VIPs. From catering services to gala banquets, the hotel can flexibly correspond to the diverse needs of meetings & events.

04 Pre/post-convention excursions

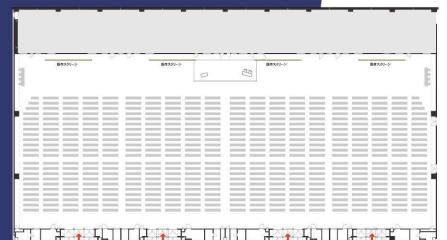
Before and after your convention or event, take some time and enjoy all that Nagasaki has to offer, day and night, including dining, sightseeing, and shopping for souvenirs.

Convention Hall

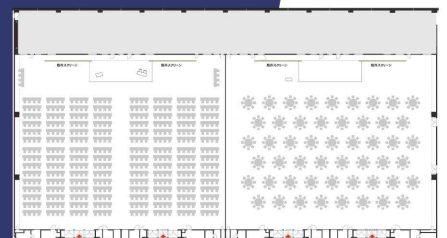
Offering approximately 2,700m² of space, which can be divided to accommodate various types of events, such as lectures, conventions, and receptions. Featuring a ceiling height of 10m, and equipped with a state-of-the-art acoustic system.



Layout examples



CH1-4: Theater style, 2,628 seats



CH3, 4: Classroom style, 2 people/table, 480 seats

CH1, 2: Roundtable style, 8 people/table, 408 seats

2,700
Seats

2,700+ seating
configurations are
possible.

450
Inch

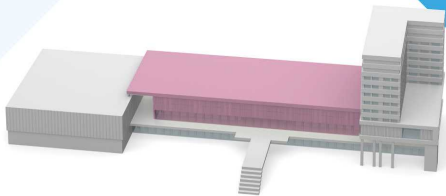
Large 450in screen
& 20,000lm projector

1 → 4

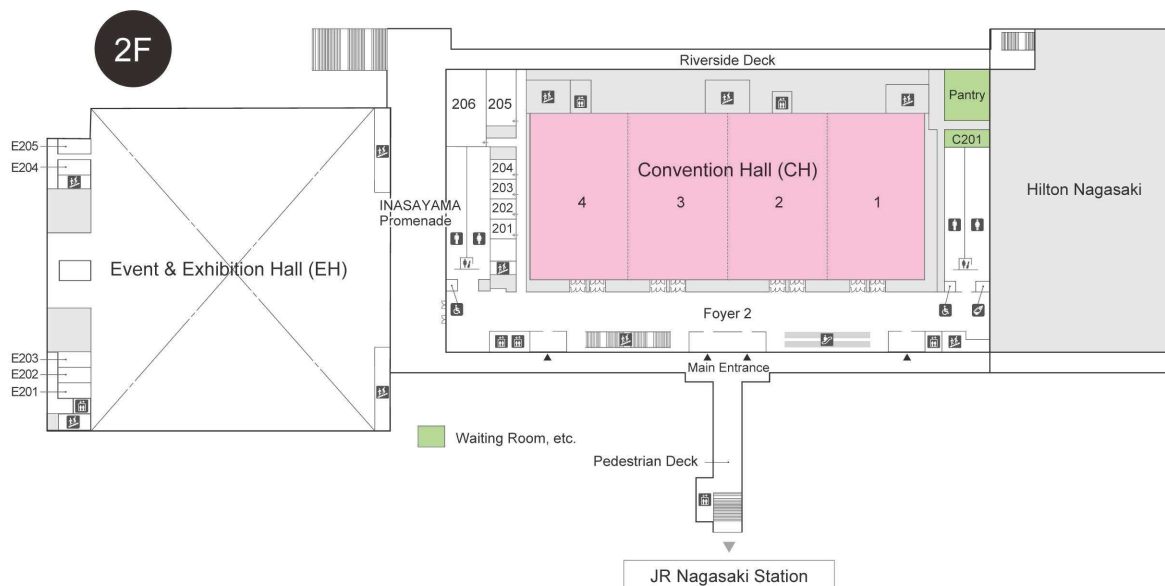
Dividable up to 4
sections. Adjustable
for any occasion
including conferences,
receptions, exhibitions
and other events.

**Simultaneous
Interpretation**

With four simultaneous
interpretation booths, large-scale
multilingual international
conference support is available.



DEJIMA MESSE NAGASAKI



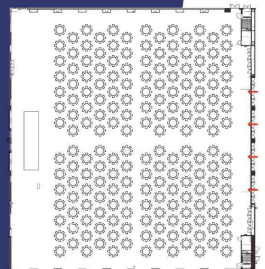
Event & Exhibition Hall

Nagasaki's first full-scale exhibition hall with approximately 3,800m² of pillar-free space, which can be divided in half to suit the size of exhibitions, events, concerts, etc. The ceiling height is 12m, with a floor load of 5t/m².

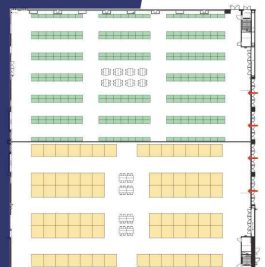


Layout examples

EH: Banquet
182 round tables for 8
Total 1,456 seats



EH (B): Exhibition
Booth size: 1.8m x 0.9m
Total 250 booths



EH (A): Exhibition
Booth size: 3.0m x 3.0m
Total 76 booths

Easy move -in/out

All types of move-in/out vehicles and catering cars are allowed to directly access the venue.

3,800 m²

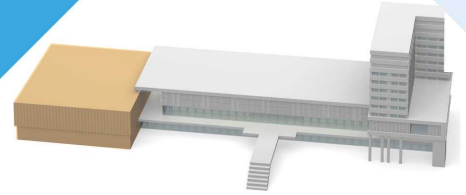
60m x 64m surface space: half the size of a soccer pitch

Water/ Electricity/ Gas/Internet

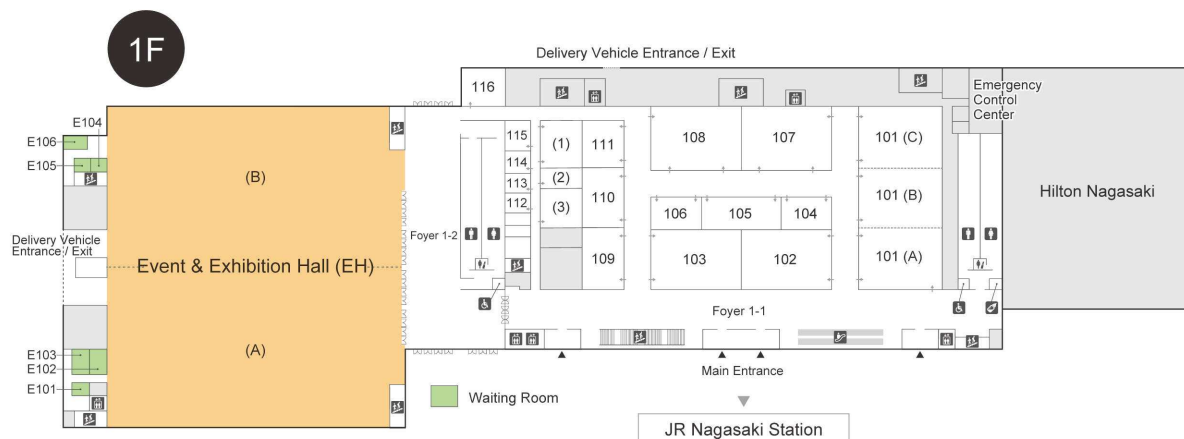
Floor pit (water, electricity, gas, internet) designed to adjust to the needs of any type of event.

10Gbps

Easy set up including for e-Sport events
Separate contract required.
Can be installed anywhere in the venue.



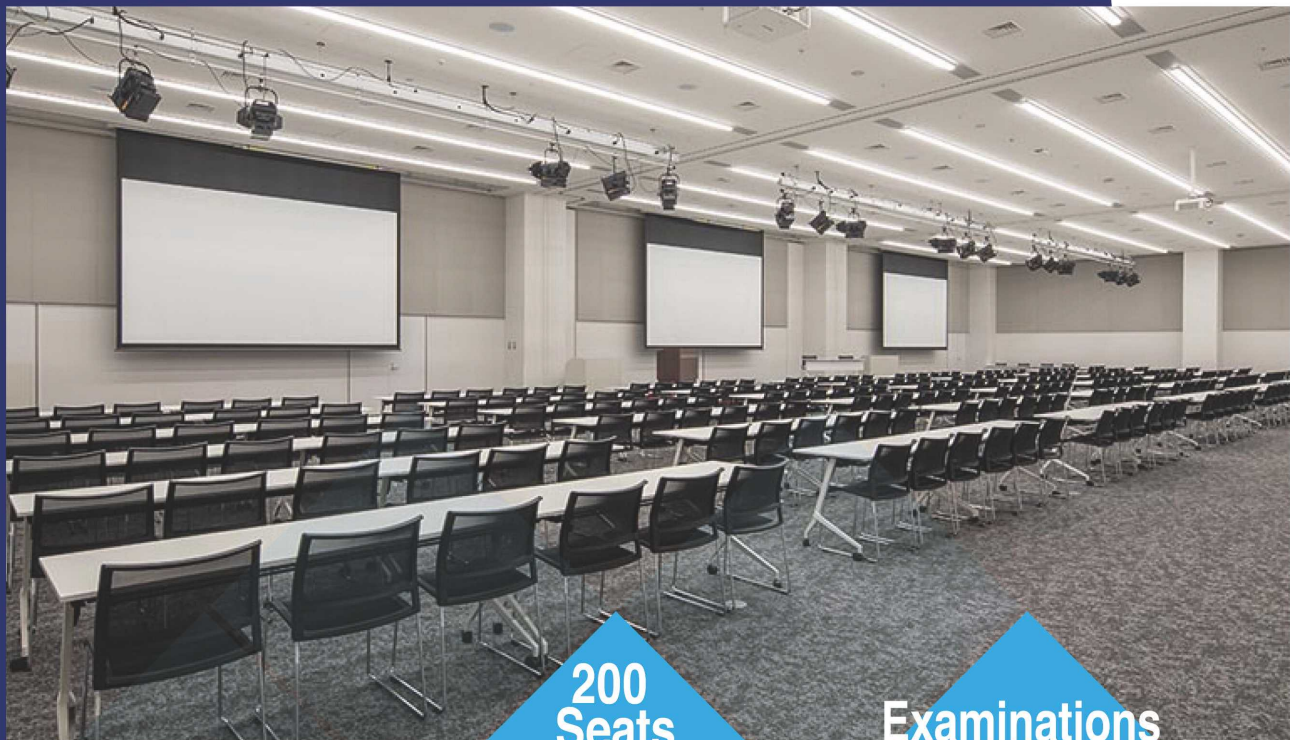
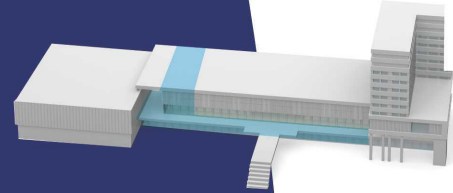
DEJIMA MESSE NAGASAKI



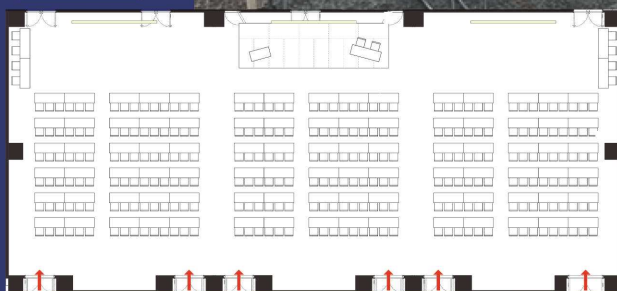
Conference Rooms

Conference Room 101 (large)

Dividable into 3 optional spaces of 200m², 400m², and 600m². Functional and easily adaptable for large, medium, or small meetings.



Layout example



Classroom style, 3 people/table, 270 seats

**200
Seats
x
3 Spaces**

Dividable into 3 spaces, 200 seats x 3 spaces, total 600 seats.

**Examinations
and Trainings**

Suitable not only as a lecture hall but also for small and medium sized testing or training locations.

Parties

A space for formal dinner or casual cocktail parties.

1F



Conference Room (medium)

4 medium-sized conference rooms (210-230m²):
Rooms 102, 103, 107, 108



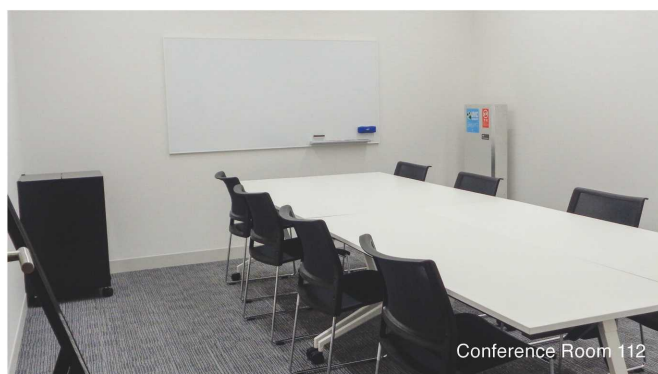
Conference Room 102



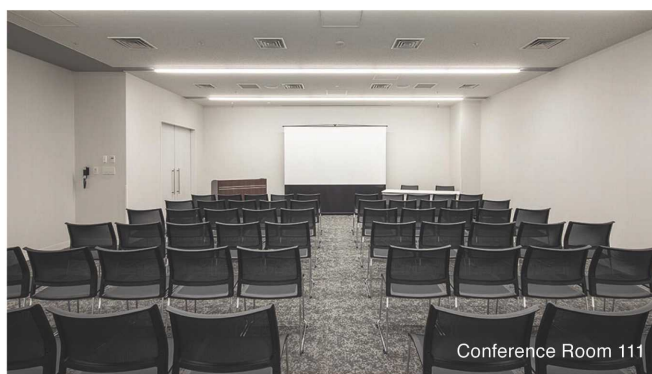
Conference Room 103

Conference Room (small)

17 small-sized conference rooms (20-130m²):
Rooms 104-106, 109-116, 201-206



Conference Room 112



Conference Room 111

VIP Reception Room, Reception Room, Organizer's Office, etc.



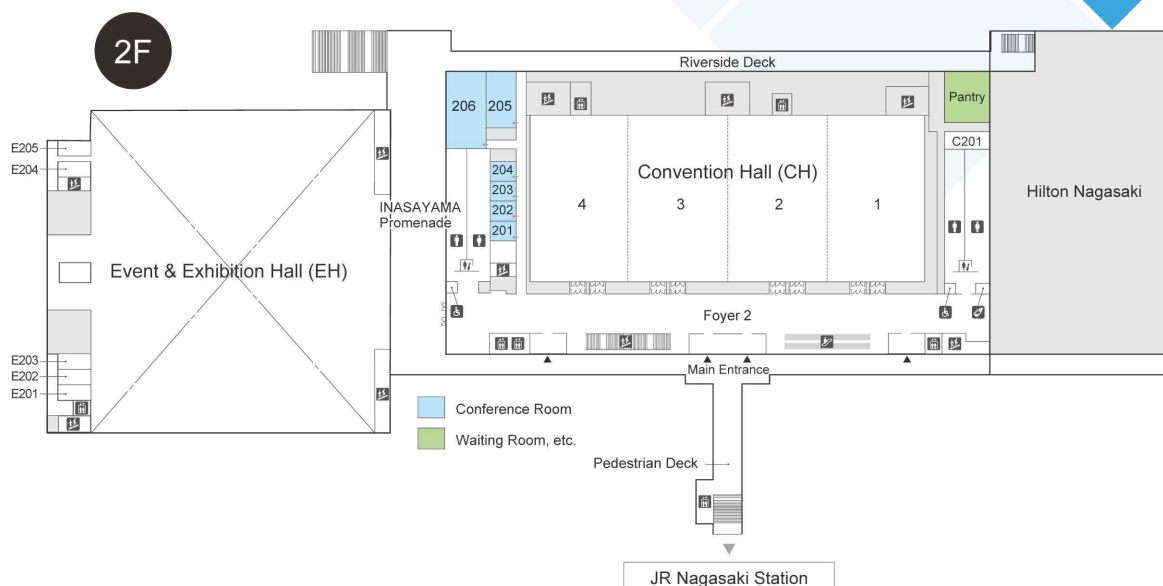
VIP Reception Room



Reception Room

24 + α

Including Conference Room 101, a total of 24 meeting rooms (large, medium, small) are available. Plus, waiting rooms.



Room Rental Price List

Room Rental Price List

10% Tax included (JPY)

Floor	Room Name			Area (m²)	Ceiling Height (m)	Capacity *1				Rates						Overtime per hour	
						Theater Style	Classroom Style	Island	Hollow Square	Morning	Afternoon	Evening	Morning and Afternoon	Afternoon and Evening	All Day	7:00-9:00 22:00-23:00	23:00-7:00
							3/table *2	2/table *2	3/table *2								
2F	Convention Hall (CH)	4/4 sections	Weekdays	2,700	10	2,628	1,440	1,280	564	268,400	358,600	358,600	717,200	807,400	1,116,000	106,700	125,400
			Weekends/ Holidays							322,300	430,100	430,100	861,300	969,100	1,399,200	128,700	150,700
		3/4 sections	Weekdays	2,025		1,968	1,080	960	234	240,900	322,300	322,300	644,600	726,000	1,049,400	95,700	112,200
			Weekends/ Holidays							289,300	386,100	386,100	774,400	871,200	1,258,400	115,500	135,300
		2/4 sections	Weekdays	1,350		1,368	720	640	174	177,100	236,500	236,500	473,000	532,400	768,900	70,400	82,500
			Weekends/ Holidays							212,300	283,800	283,800	567,600	639,100	922,900	84,700	99,000
		1/4 section	Weekdays	675		678	360	320	114	88,000	117,700	117,700	236,500	266,200	383,900	35,200	40,700
			Weekends/ Holidays							105,600	141,900	141,900	283,800	319,000	460,900	41,800	49,500
1F	Event & Exhibition Hall (EH)	2/2 sections	Weekdays	3,800	12	4,650	2,664	-	-	-	-	-	768,900	864,600	1,249,600	114,400	134,200
			Weekends/ Holidays							-	-	-	922,900	1,037,300	1,499,300	137,500	160,600
		1/2 section	Weekdays	1,900		2,160	1,188	-	-	-	-	-	400,400	451,000	651,200	59,400	69,300
			Weekends/ Holidays							-	-	-	480,700	541,200	782,100	71,500	83,600
	Conference Rooms	101	3/3 sections	600	5	520	270	288	126	94,600	126,500	126,500	253,000	283,800	410,300	37,400	44,000
			2/3 sections	400		344	180	192	84	66,000	88,000	88,000	176,000	198,000	286,000	24,200	30,800
			1/3 section	200		164	90	96	54	33,000	44,000	44,000	88,000	99,000	143,000	12,100	15,400
		102		210	5	190	120	84	60	31,900	41,800	41,800	84,700	95,700	137,500	12,100	14,300
		103		210	5	190	120	84	60	31,900	41,800	41,800	84,700	95,700	137,500	12,100	14,300
		104		60	3	48	21	24	30	9,900	13,200	13,200	26,400	29,700	42,900	3,300	4,400
		105		100	3	91	45	40	48	15,400	20,900	20,900	41,800	46,200	67,100	5,500	6,600
		106		60	3	48	21	24	30	9,900	13,200	13,200	26,400	29,700	42,900	3,300	4,400
		107		230	5	190	120	92	60	31,900	41,800	41,800	84,700	95,700	137,500	12,100	14,300
		108		230	5	190	120	92	60	31,900	41,800	41,800	84,700	95,700	137,500	12,100	14,300
		109		100	3	70	42	48	42	15,400	20,900	20,900	41,800	46,200	67,100	5,500	6,600
		110		100	3	70	42	48	42	15,400	20,900	20,900	41,800	46,200	67,100	5,500	6,600
		111		80	3	70	33	36	36	12,100	16,500	16,500	33,000	36,300	52,800	4,400	5,500
		112		20	3	-	-	8	-	3,300	4,400	4,400	8,800	9,900	14,300	1,100	1,100
113		20	3	-	-	8	-	3,300	4,400	4,400	8,800	9,900	14,300	1,100	1,100		
114		20	3	-	-	8	-	3,300	4,400	4,400	8,800	9,900	14,300	1,100	1,100		
115		30	3	-	-	16	-	4,400	6,600	6,600	13,200	14,300	20,900	1,100	1,100		
116		70	3	70	27	32	30	9,900	14,300	14,300	28,600	31,900	46,200	3,300	4,400		
2F	Conference Rooms	201		20	3	-	-	8	-	2,200	3,300	3,300	6,600	6,600	9,900	1,100	1,100
		202		20	3	-	-	8	-	2,200	3,300	3,300	6,600	6,600	9,900	1,100	1,100
		203		20	3	-	-	8	-	2,200	3,300	3,300	6,600	6,600	9,900	1,100	1,100
		204		20	3	-	-	8	-	2,200	3,300	3,300	6,600	6,600	9,900	1,100	1,100
		205		70	3	36	24	24	30	11,000	15,400	15,400	30,800	34,100	49,500	4,400	4,400
		206		130	3	80	42	48	48	17,600	24,200	24,200	48,400	53,900	78,100	6,600	7,700

*1 Seating capacity numbers are estimates only.

*2 Table size: W1800mm×D600mm×H720mm

Facility Use Discount Rate

	Terms	Discount
Total Use	Use of the facility including Convention Hall, Event & Exhibition Hall and 15 or more Conference Rooms	15% discount on the total use amount
Multiple Use	Use of Convention Hall or Event & Exhibition Hall and 10 or more Conference Rooms	10% discount on the total use amount
Set-up / Removal	Set-up and removal days of Convention Hall and Event & Exhibition Hall	30% discount on the applicable room rate
International	International event of 100 or more overseas participants	30% discount on the room rate, but discount rate caps at 2 million yen

For details, please contact Nagasaki MICE Co., Ltd. (sales@dejima-messe.jp) .

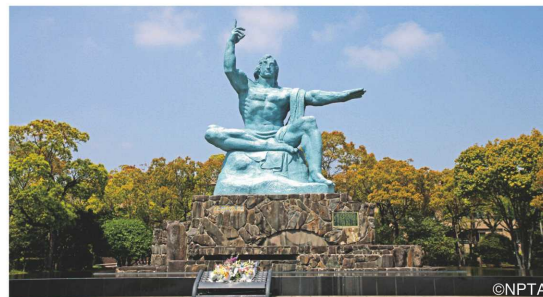
Culture and Diversity

In Nagasaki, the blending of foreign cultures and religions over centuries, influenced by its geographical location and historical background, provides visitors a rich multinational gastronomic experience. This cultural diversity also proves beneficial for international exchange, promoting understanding and collaboration among individuals from varied backgrounds.



Message of Peace

Nagasaki, much like Hiroshima, has risen from the horrific destruction caused by the atomic bomb. Today, as a testament to the world, the city continues to push for lasting peace by calling for the abolition of nuclear weapons, with the hope that such a tragedy is never repeated again.



Advanced Technology and Research Institutes

Nagasaki is the home of many renowned research institutes, showcasing innovations in medicine, marine energy, and more through the use of cutting-edge technologies. Nagasaki University, in particular, stands out as a national leader in infectious disease research, equipped with world-class facilities and organizations dedicated to disease control.



Fantastic Views

Facing the sea, Nagasaki offers beautiful natural surroundings and picturesque scenic views, creating a relaxing atmosphere for visitors. Furthermore, the bowl-shaped topography surrounding the Port of Nagasaki (also known as the "Port of Cranes") creates a unique three-dimensional night view, which can be enjoyed from throughout the city.



Nagasaki 長崎

Tradition of International Exchange

Nagasaki has long been a hub of international exchange in Japan. In the 16th century, Portuguese vessels arrived, bringing Christianity and Western culture. Subsequent interactions with the Dutch and Chinese further solidified its role as a crucial port connecting Japan to the outside world. Nagasaki embraces its history characterized by the exchange and harmonious coexistence of diverse cultures, a legacy that continues to enrich the city to this day.





Social Events

Unique Venues

Culture, History and Nature.

There are many venues unique to Nagasaki
that can be experienced!

Glover Garden

Glover Garden is located on Minami-Yamate hill in Nagasaki and features nine Western-style buildings, including the Glover House. Glover House is the oldest Western-style wooden house existing in Japan and was the residence of a Scottish merchant Thomas B. Glover, a significant contributor to the modernization of Japan. The house is registered on the UNESCO World Heritage List as part of the "Sites of Japan's Meiji Industrial Revolution" series.

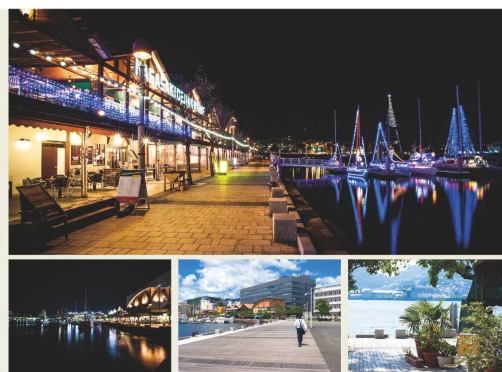
Max capacity: 300 people



Dejima Wharf

This commercial complex in the Nagasaki Port Bay area offers a resort-like atmosphere with impressive night views of Nagasaki Port and of Mount Inasa, one of the world's top three nightscape views. The two-story building along the seafront is lined with fashionable and unique shops, including restaurants serving gourmet dishes made with fresh local seafood. Guests can enjoy their meals and the harbor views together on the open terrace.

Max capacity: 1,000 people



Nagasaki Confucian Shrine

Built in 1893, Nagasaki Confucius Shrine (Kōshi-byō) is said to be the only Confucius shrine outside of China to be constructed by Chinese. The colorful, atmospheric shrine also contains a museum at the rear of the grounds. At night when lit up, you are surrounded by a magical wonder that reveals Nagasaki's unique culture.

Max capacity: 200 people



Unique Venues in Nagasaki City

20 venues available

hosting from thirty to several thousand participants

For further information, please visit the website of the Nagasaki International Tourism and Convention Association.
(<https://uniquevenues-mice.nagasaki-visit.or.jp/>)



There are more than 6,000 hotel rooms
in Nagasaki city,
with many more set to be added.

New hotels around Nagasaki Station

Hilton Nagasaki

- **Opened in November 2021**
- **200 rooms**



Global brand Hilton opened their second hotel in Kyushu here in Nagasaki!

Excellent location right in front of Nagasaki Station.



Nagasaki Marriott Hotel

- **Newly opened in January 2024**
- **207 modern guest rooms**

Just two minutes' walk from Dejima Messe. Features spacious guest rooms with balconies. Restaurants and function space provide outside terrace areas. Offers the finest and freshest local and international cuisine. An ideal base to explore the city.



Stadium City Hotel Nagasaki

- **Scheduled to open in fall 2024**
- **243 rooms**



The first hotel in Japan where you can watch soccer from your room! You can enjoy a sense of realism, a sense of specialness, plus the scenery unique to Nagasaki at the same time.

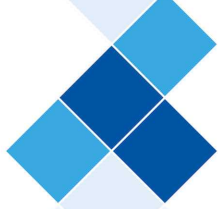


Overview of Accommodations in Nagasaki City

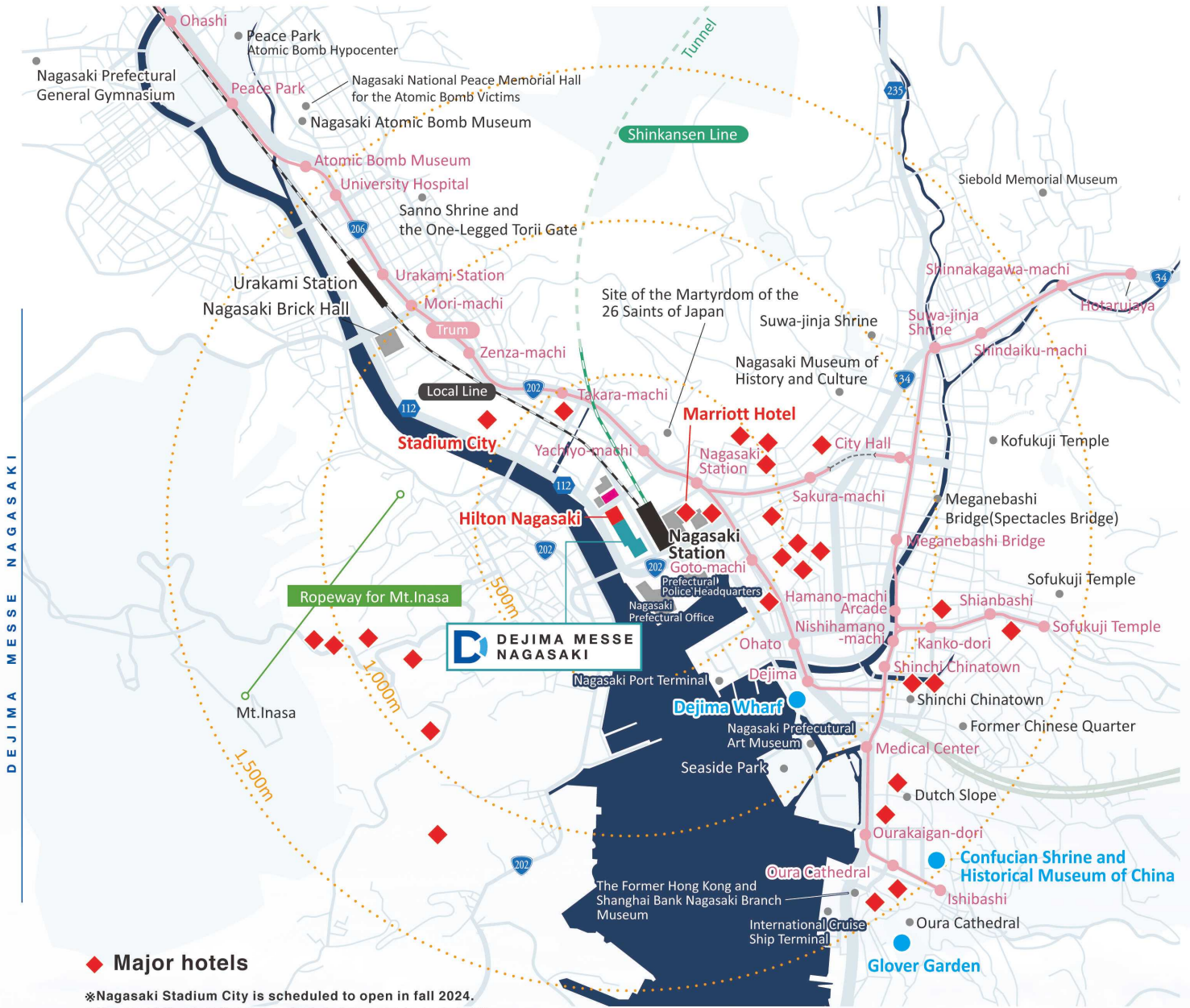
6,110 rooms (53 facilities)*

(1,704 single rooms, 1,107 double rooms, 2,415 twin rooms, 449 Japanese-style rooms, 144 Japanese-Western combination rooms, 42 suites, 249 other rooms)

*As of April 2023



About Nagasaki Downtown

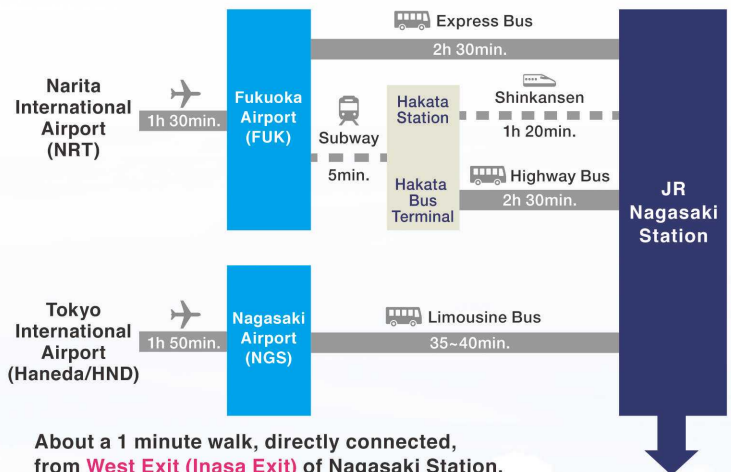


Access to Japan



City	Flight time	Time difference from Japan
SEOUL	1hour 50min	0
SHANGHAI	2hours 30min	-1
TAIWAN	3hours	-1
HONG KONG	3hours 30min	-1
SINGAPORE	6hours 40min	-1
SYDNEY	10hours	+1
DUBAI	10hours	-5
ROMA	12hours	-8
FRANKFURT	12hours	-8
PARIS	12hours	-8
LONDON	12hours	-9
VANCOUVER	10hours	-17
LOS ANGELES	11hours	-17
NEW YORK	14hours	-14

Access to Nagasaki



About a 1 minute walk, directly connected, from **West Exit (Inasa Exit)** of Nagasaki Station.





Dejima Messe Nagasaki

4-1 Onouemachi, Nagasaki City, Nagasaki Prefecture, 850-0058 JAPAN
<https://dejima-messe.jp/en>

For inquiries, please contact:

Dejima Messe Nagasaki Designated Administrator

Nagasaki MICE Co., Ltd. Sales and Management Office

E-mail: sales@dejima-messe.jp

